

Alpha Pro

ALPHA Pro 2.0

Quick Guide

Attention! This is only a Quick Guide to help you start using the software.
For more detailed information please read Alpha Pro User's Manual.

Contents:

Overview	3
Creating Pages	5
Creating Effects	7
Creating Horizontal Crawl / Vertical Roll	
Creating Reveal Up / Reveal Left	
Creating Fade In / Fade Out	
Creating Wipe	
Creating Animation	
Creating Zoom	
Hot Keys	11

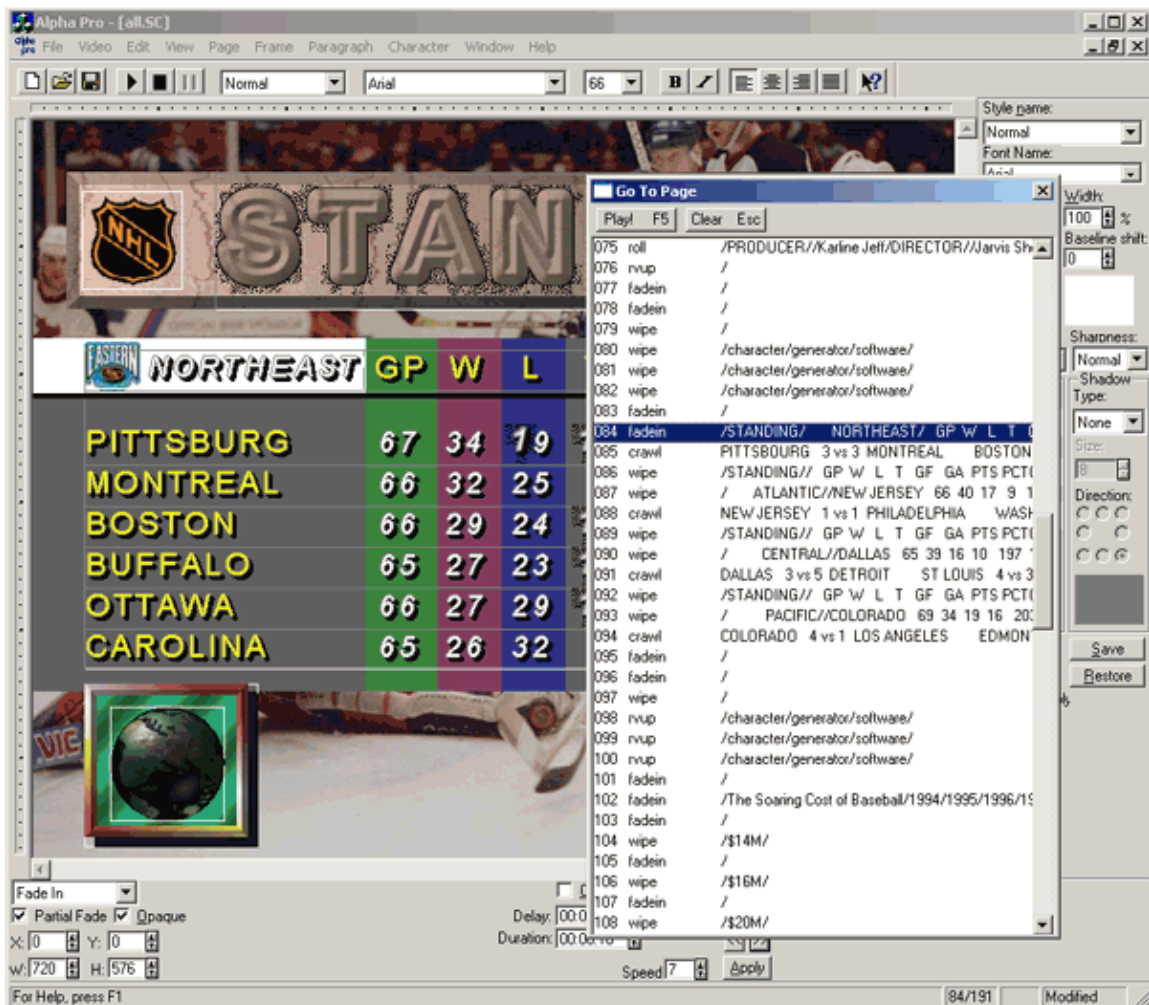
WELCOME TO ALPHA PRO 2.0!



Overview

Alpha Pro 2.0 software helps to solve the majority of standard problems in CG on-air design. The software has inbuilt update and expansion capabilities due to overall performance improvement and development of software and computerized equipment.

The program operates in real time and is designed for titles overlay while editing or on-air; graphic design of live TV programs, such as news, weather forecasts, sports reports and talk shows; smooth playback of over 300 special effects (Cut, Wipe, Fade In/Out, Roll, Crawl, Zoom, etc.); creating static or dynamic logos; text or graphic information mapping over with the use of crawl or roll effects, etc.



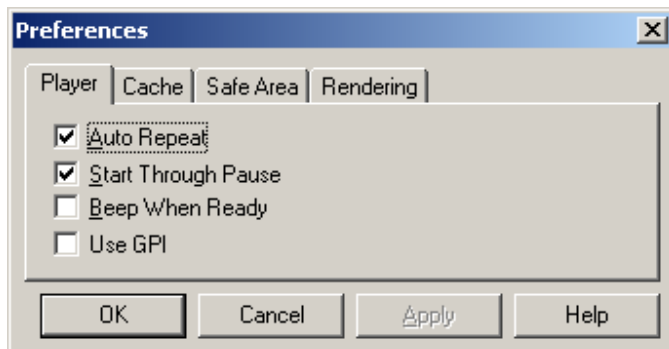
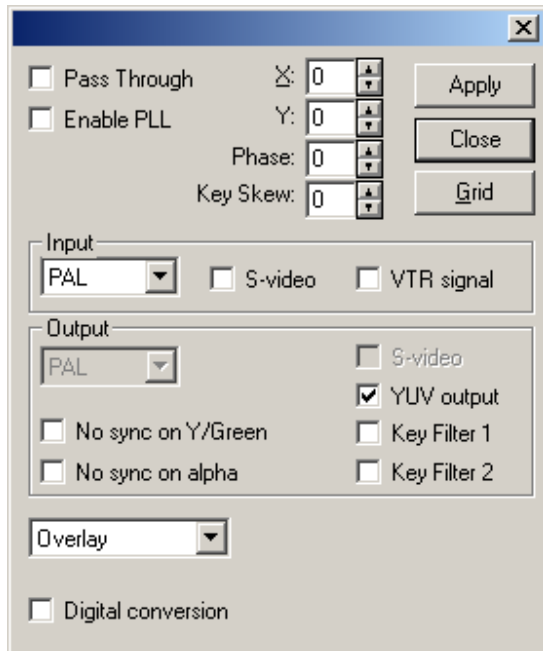
Alpha Pro program creates **Scripts** (sequences of titles output with various effects). The program looks like a multi-window text editor, which allows to edit and keep several **Scripts** in readiness for broadcast. Besides, one **Script** can be opened in multiple windows simultaneously, which allows to make quick changes in different parts of the text.

Scripts consist of an unlimited number of **Pages**. Each **Page** has a video effect assigned to it, which defines the method of the **Page** appearance, movement and fading out from the screen.

All objects included on one **Page** will appear/disappear with the same transition effect. To create an object with a different transition effect, you have to create a new **Page**.



To edit your video card options, in main menu click **Video > Hardware Options**.

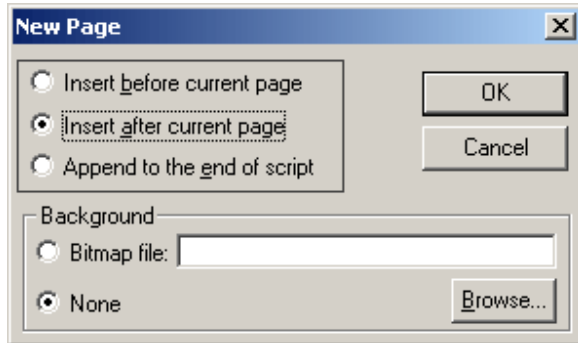


To edit program settings, in main menu click **Video > Preferences**.

Creating Pages

To create a new Script, in main menu click **File > New**.

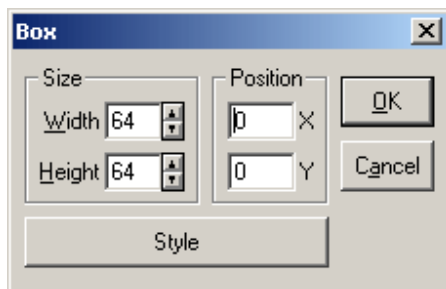
To create a new Page, in main menu click **Page > New**.



You can place the Pages in a desired order and select a Background (if necessary).

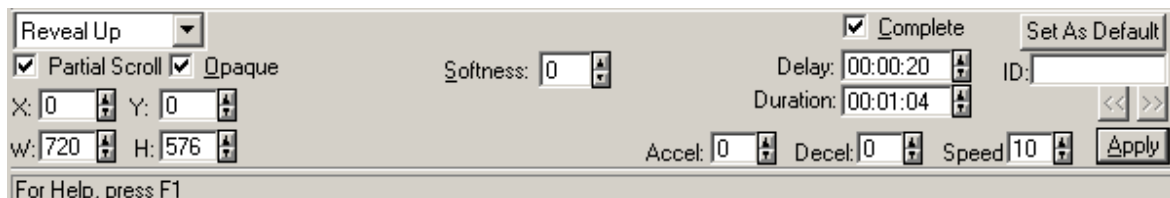
Let's create a box and place some text on top of it (like a caption in TV talk show or news report). We can then overlay this caption on outgoing signal. This can be very useful in on-air editing.

1. In main menu, click **Frame > New Box**. This will be our box, on top of which we will display text.



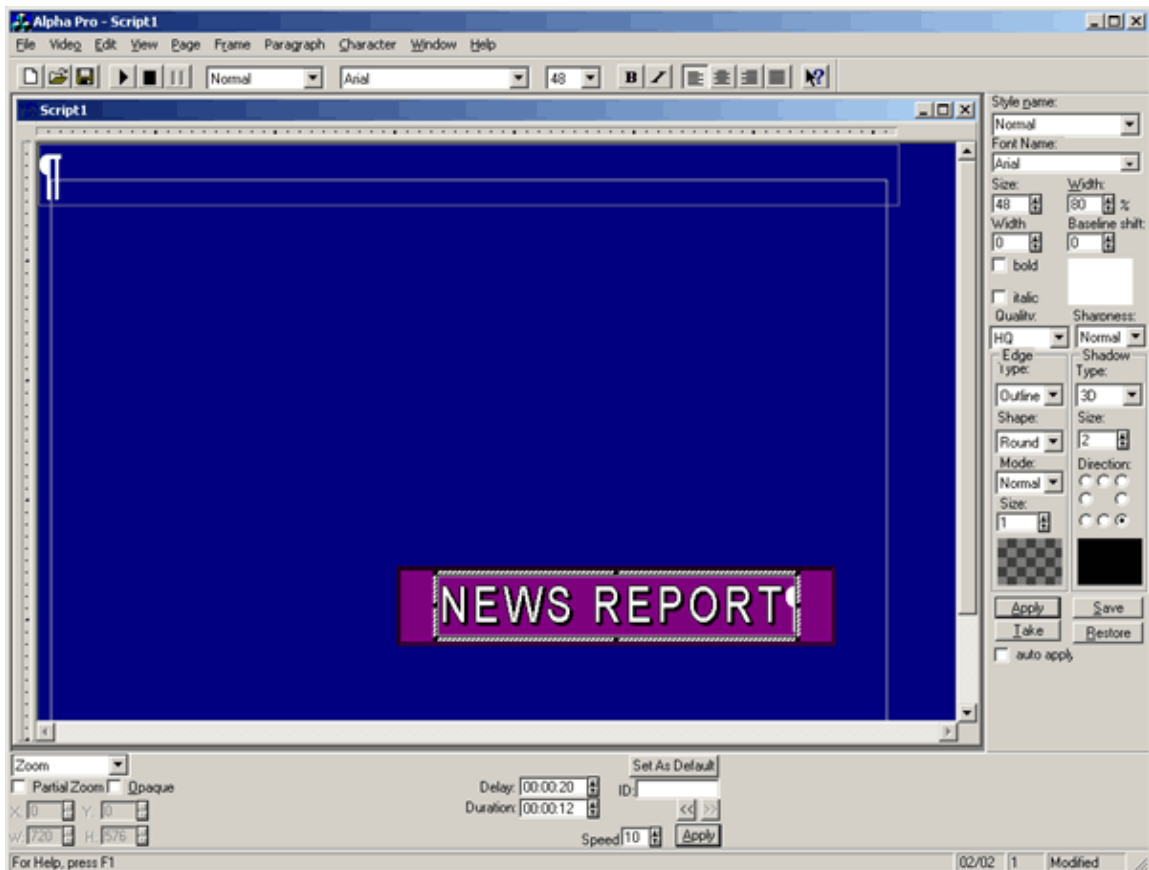
You can select **Style** and customize different parameters of the box appearance. You can also access this dialog window by just double-clicking the box itself. Select the desired parameters and clock **OK**.

2. Now, in the lower part of the program window you can specify the transition Effects for this Page.



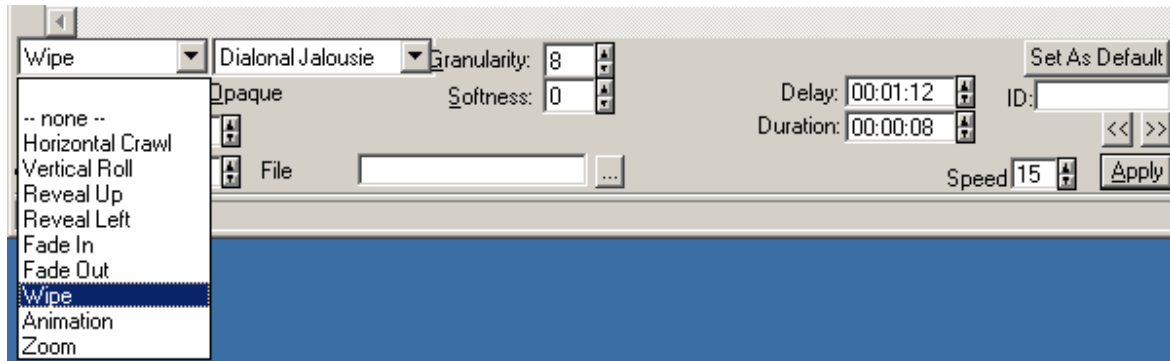
Let's say, we want the box to slide in from the left, so we would choose **Reveal Left** from the pulldown menu. Select all necessary parameters and uncheck **Complete** (so that our box object will continue to show when Page 2 appears).

3. Add another Page (**Page > New**). In the dialog box choose **Insert after current page** (for it to appear after our first Page with the box). In main menu, click **Frame > New Frame** and type your text in the text box. Locate your text over the box and select all the necessary Effect parameters. Let's choose **Zoom**, for the text to zoom into the box.



We have created a simple box that will slide in from the left and a text caption that will appear on top of it. Now we can overlay it on our video signal.

Creating Effects



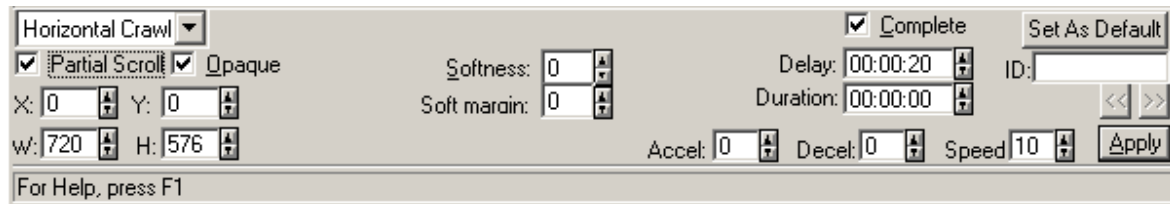
In Page attributes menu, there are 9 types of Page transition Effects:

Horizontal Crawl	Vertical Roll	Reveal Up
Reveal Left	Fade In	Fade Out
Wipe	Animation	Zoom

Each Page, including all its Objects, can use only one Effect. If you wish to create an Object with another Effect assigned to it, you must create a new Page, place the Object there and assign a new Effect.

Creating Horizontal Crawl / Vertical Roll

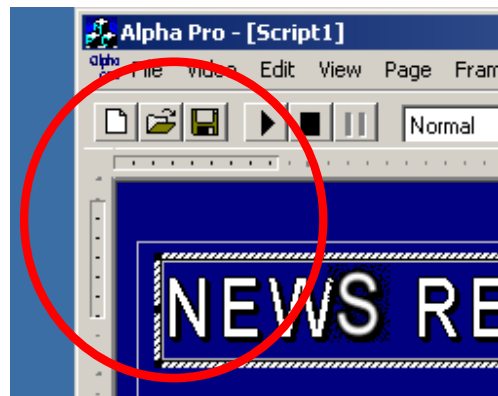
Select the Effect from the pulldown menu.



Crawl and **Roll** Effects have similar settings parameters. **Horizontal Crawl** will run from right to left of the screen and **Vertical Roll** will run from bottom to top of the screen.

Select **Partial Scroll** and use **X**:, **Y**:, **W**:, **H**: values to define the screen area where you want to display the Effect.

You can also use the ruler at the top and on the left side of the **Page** to delimitate the Effect area.



When you select **Complete**, the Effect will play through **completely**, meaning it will appear and disappear from the screen. If Complete is unchecked, the Object will slide in and stay on the screen.

You can modify the speed of the Effect using **Speed**, **Duration** and **Delay** settings and make the Effect linger a bit after appearing and before disappearing from the screen by adjusting **Accel:** and **Decel:** parameters.

If you check **Opaque**, the new selected Effect area will override the previous Page content.

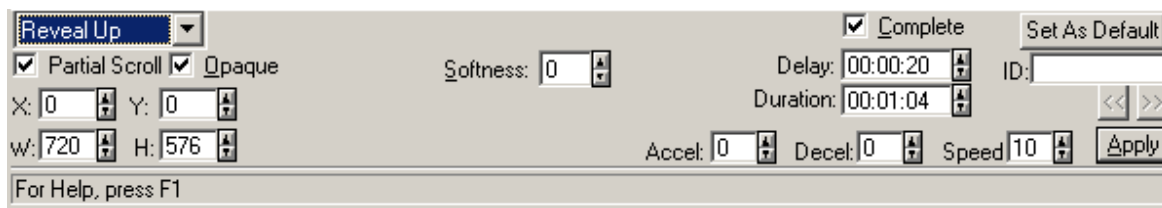
Click **Apply** to save all the changes you made.

Click << or >> to jump to the next or to the previous **Page**.

Crawl and Roll can contain a text line of infinite length. Reveal Up and Reveal Left text messages are limited by the screen boundaries.

Creating Reveal Up / Reveal Left

Select the Effect from the pulldown menu.



Reveal Up and **Reveal Left** Effects have similar settings parameters. **Reveal Up** will run from bottom to top of the screen and **Reveal Left** will run from right to left of the screen.

Select **Partial Scroll** and use **X:**, **Y:**, **W:**, **H:** values to define the screen area where you want to display the Effect. You can also use the ruler at the top and on the left side of the **Page** to delimitate the Effect area.

When you select **Complete**, the Effect will play through **completely**, meaning it will appear and disappear from the screen. If Complete is unchecked, the Object will slide in and stay on the screen.

You can modify the speed of the Effect using **Speed**, **Duration** and **Delay** settings and make the Effect linger a bit after appearing and before disappearing from the screen by adjusting **Accel:** and **Decel:** parameters.

If you check **Opaque**, the new selected Effect area will override the previous Page content.

Click **Apply** to save all the changes you made.

Click << or >> to jump to the next or to the previous **Page**.

Creating Fade In / Fade Out

Select the Effect from the pulldown menu.



Select **Partial Fade** and use **X**:, **Y**:, **W**:, **H**: values to define the screen area where you want to display the Effect. You can also use the ruler at the top and on the left side of the **Page** to delimitate the Effect area.

When you select **Complete**, the Effect will play through **completely**, meaning it will appear and disappear from the screen. If Complete is unchecked, the Object will appear and stay on the screen.

You can modify the speed of the Effect using **Speed**, **Duration** and **Delay** settings.

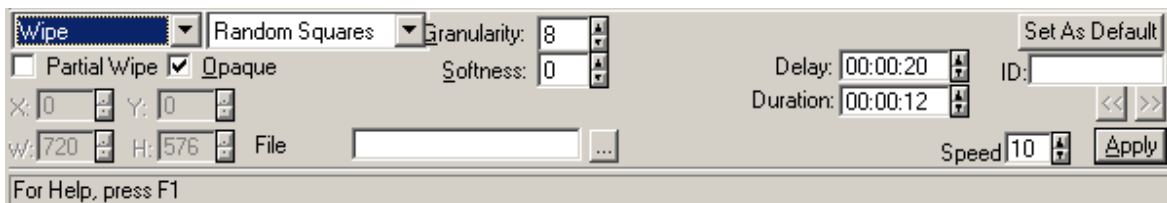
If you check **Opaque**, the new selected Effect area will override the previous Page content.

Click **Apply** to save all the changes you made.

Click << or >> to jump to the next or to the previous **Page**.

Creating Wipe

Select the Effect from the pulldown menu.



Select **Partial Wipe** and use **X**:, **Y**:, **W**:, **H**: values to define the screen area where you want to display the Effect. You can also use the ruler at the top and on the left side of the **Page** to delimitate the Effect area.

You can select Wipe transition effect from the pulldown menu (Random Squares, Wipe Right, etc.), or use a image file by clicking **File ...** and locating an alpha wipe file from the browser window.

You can modify the speed of the Effect using **Speed**, **Duration** and **Delay** settings.

If you check **Opaque**, the new selected Effect area will override the previous Page content.

Click **Apply** to save all the changes you made.

Click << or >> to jump to the next or to the previous **Page**.

Creating Animation

Select the Effect from the pulldown menu.



To select an animation file you wish to use, click **File ...** and choose a desired file from the browser window.

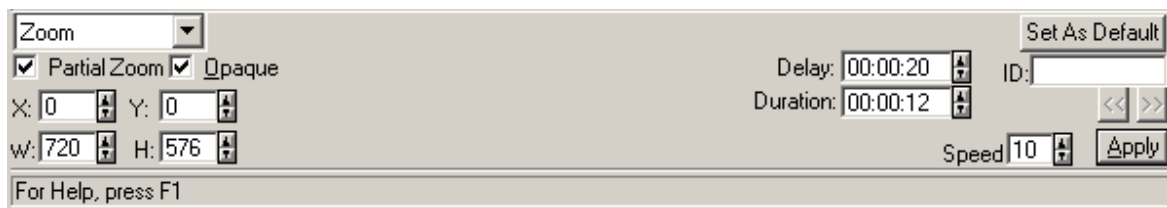
Check **Complete**, if you want the animation to play through completely and disappear from the screen.

You can modify the Effect **Duration**.

Fade adds a fade-in effect when the **Animation** appears.

Creating Zoom

Select the Effect from the pulldown menu.



Select **Partial Zoom** and use **X**:, **Y**:, **W**:, **H**: values to define the screen area where you want to display the Effect. You can also use the ruler at the top and on the left side of the **Page** to delimitate the Effect area.

You can modify the speed of the Effect using **Speed**, **Duration** and **Delay** settings.

If you check **Opaque**, the new selected Effect area will override the previous Page content.

Click **Apply** to save all the changes you made.

Click << or >> to jump to the next or to the previous **Page**.

Hot Keys

- F5** Play
- F9** Pause
- Esc** Stop Press **Esc** twice to clear the screen
- F8** Plays the current **Page** and jumps to the next one

For more detailed information please read Alpha Pro User's Manual.